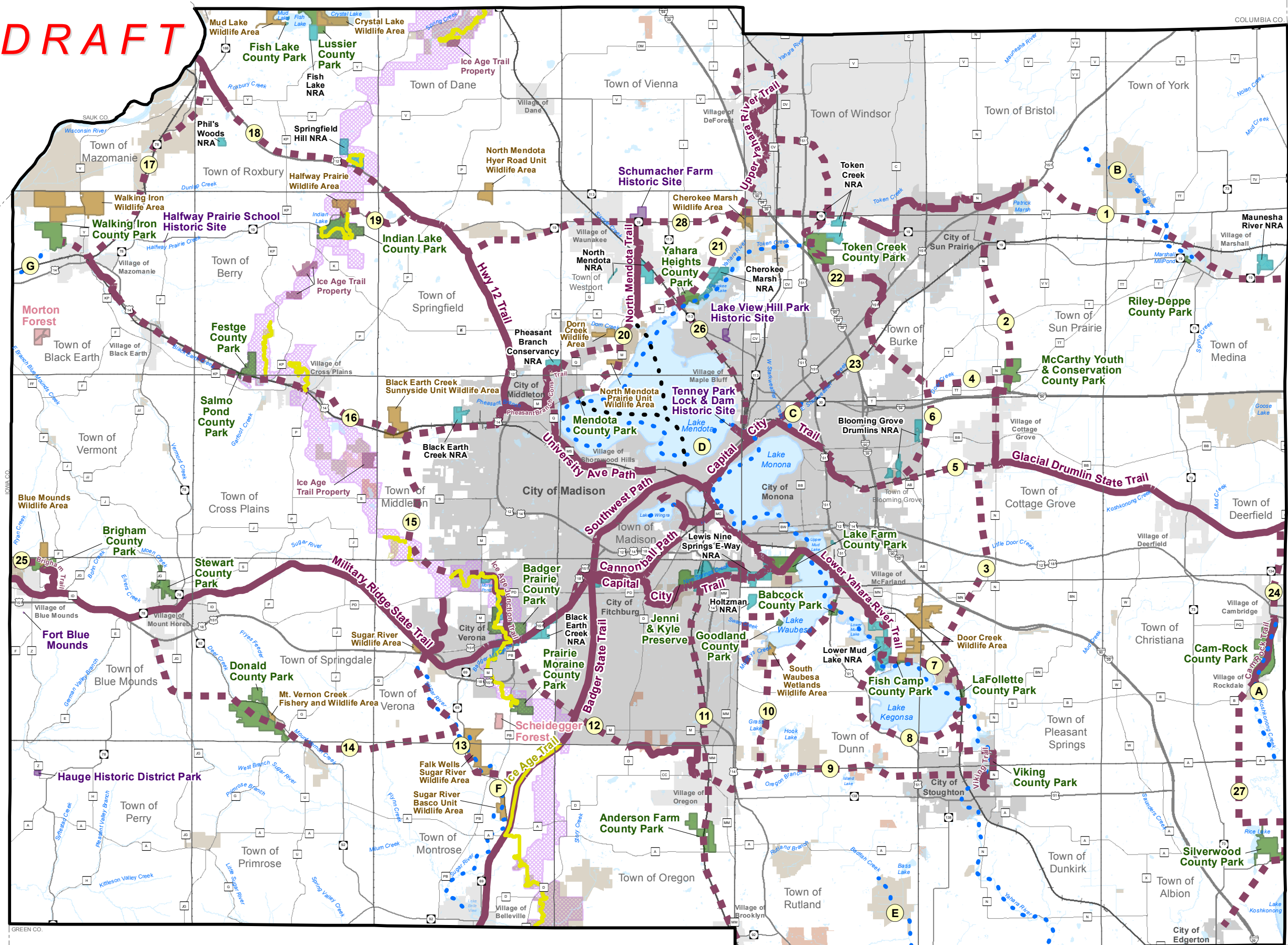


DRAFT

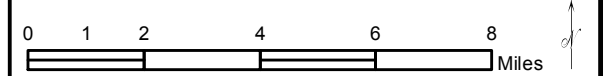
Dane County Parks & Open Space Plan Regional Trail Map 2018 - 2023



- Existing and Proposed Regional Trails**
- Existing Shared-Use Bicycle/Pedestrian Trail
 - Proposed Shared-Use Bicycle/Pedestrian Trail
 - Proposed Bicycle/Pedestrian Ferry
 - Existing Water Trail
 - Existing Ice Age National Scenic Trail
 - Ice Age National Scenic Trail Corridor
- Dane County Park Commission Lands**
- Recreation Park
 - Natural Resource Area
 - Wildlife Area
 - Historical or Cultural Site
 - Forest
 - Trails

- Proposed Shared-Use Bicycle/Pedestrian Trails**
1. Token Creek Co. Park to Riley Deppe Co. Park
 2. Georgia O'Keeffe Trail
 3. McCarthy Co. Park to Lake Kegonsa State Park
 4. McCarthy Co. Park Connector
 5. Capital City Trail to Glacial Drumlin Trail
 6. Blooming Grove Drumlin to Door Creek Park
 7. Lower Yahara River Trail
 8. Kegonsa Lake Loop (includes on-road segments)
 9. Stoughton to Oregon
 10. Oregon to Waubesa Lake Loop
 11. Fitchburg to Oregon Rail Trail
 12. Oregon to Badger State Trail to Military Ridge State Trail
 13. Sugar River Trail
 14. Sugar River to Mount Horeb
 15. Black Earth Creek to Pope Farm Park to Badger Prairie Co. Park
 16. Black Earth Creek (Good Neighbor) Trail
 17. Mazomanie to Sauk City Rail Trail
 18. Highway 12 Trail Connector
 19. Indian Lake Co. Park Spur Trail
 20. North Mendota Trail
 21. Upper Yahara River Trail
 22. DeForest to Sun Prairie
 23. Starkweather Creek Trail
 24. Glacial Drumlin Trail to CamRock
 25. Blue Mounds Loop
 26. Sherman Flyer Trail
 27. CamRock Co. Park to Silverwood Co. Park to City of Edgerton
 28. Highway 19 Trail
- Water Trails***
- A. Koshkonong Creek
 - B. Maunsha River
 - C. Starkweather Creek
 - D. Yahara Chain
 - E. Badfish Creek
 - F. Sugar River
 - G. Black Earth Creek

* More detailed water trail information can be found at: www.capitolwatertrails.org



Data Sources:
 Recreation Parks, Forests, Historical/Cultural Sites, Wildlife Areas, Natural Resource Area Properties, Natural Resource Area Boundaries, Trails, Proposed Regional Shared-Use Trails and Ferry, Water Trails
 Dane County Parks (2017), Municipalities, Hydrography, Town Boundary: Dane County (2017), Railroads: Dane County (2014), Ice Age National Scenic Trail, Corridor and Properties: Ice Age Trail Alliance (2017), Existing Bicycle/Pedestrian Trails: Madison Area Metropolitan Planning Organization (2017).