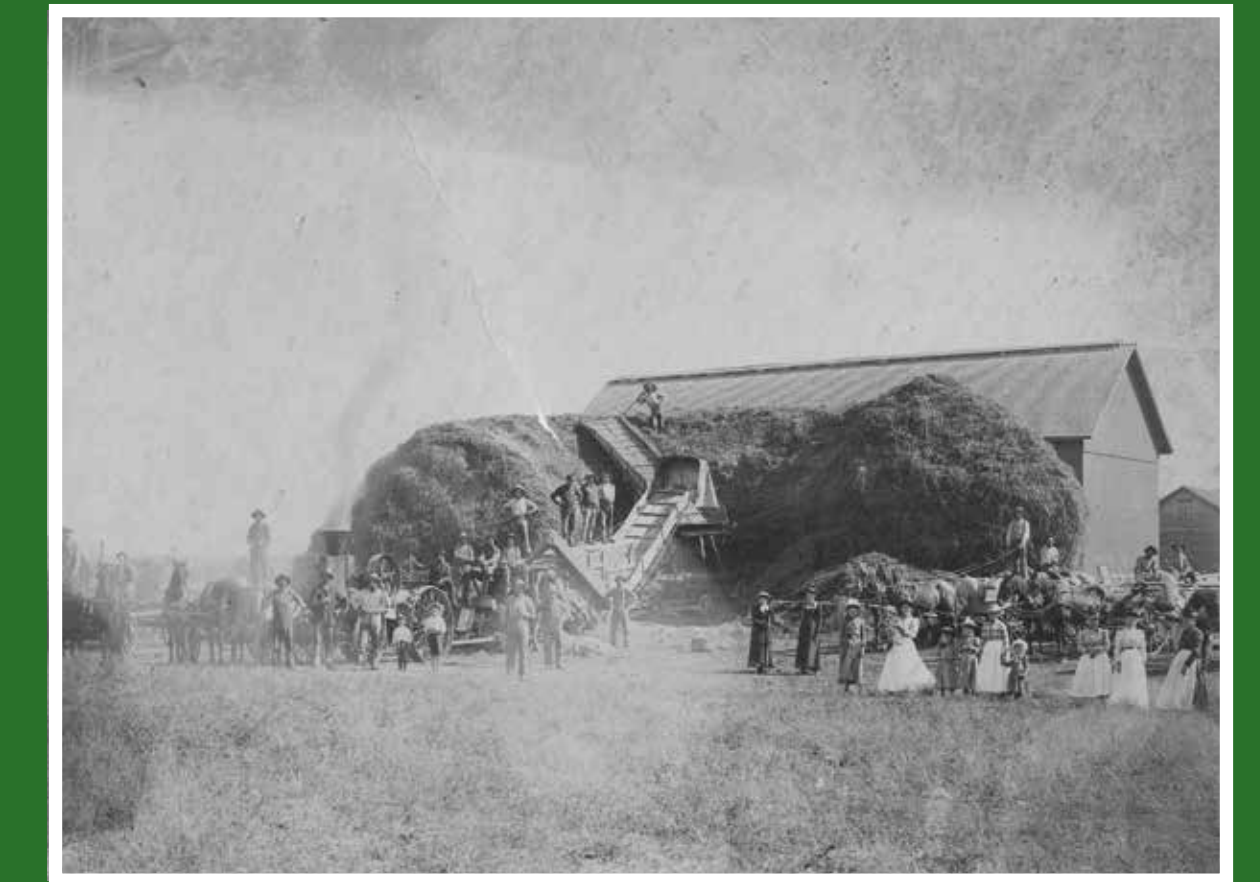


# Anderson Family History

Anderson Farm County Park is named after former Dane County Board Supervisor Lyman F. Anderson who was active in town, county and state government for over four decades. Lyman lived and farmed his entire life on this land and was legendary for championing family farming. Lyman's wife, Patricia Anderson, sold the family farm and land to Dane County in 2009. The public can enjoy this community park that honors Lyman's memory and preserves the land's beauty and agricultural heritage.



Ames – Sholts – Anderson family - The Ames family, forbearers to the Sholts and Anderson families, settled on this land in the 1800s.



Family and helpers pose with an enormous yield of hay.

## FARMING

After glaciers retreated from the area 15,000 years ago, prairies flourished and created deep, rich topsoil that was perfect for agriculture. Generations of Anderson family women helped run the farm, often in addition to outside jobs.



### Patricia and Lyman Anderson

In the early 1960's Pat started a small business delivering eggs to local households in Oregon. This grew into what would become Lucky's Poultry Ranch. At its peak, the 9,000 laying hens produced eggs for many local restaurants, grocery stores and family households in the Madison area. Pat was involved with all aspects of farm life alongside her husband Lyman who was a champion of family farming. Pat also worked for the Wisconsin Department of Natural Resources for 25 years and was involved with various community groups.



### Mary Sholts Anderson and Frank Anderson - Lyman's Parents

Mary and Frank lived on the farm across from what is now the dog park. Mary had enormous vegetable and flower gardens and was still active in milking cows at the age of 70. She taught German, English and Mathematics at Oregon High School and also taught piano lessons to many local youth.



### Alma Ames Sholts and Arthur H. Sholts Sr. - Lyman's Grandparents

Alma was a farm wife involved in all of the farming activities as well as teaching at the local one room schoolhouse. Arthur farmed and worked in education as well as being active in local and state politics as a member of the Town of Oregon Board and Wisconsin State Assembly.

## ARTHUR SHOLTS MEMORIAL WOODS - THE BEGINNINGS OF A FUTURE PARK



In 1947, Arthur H. Sholts Jr., Mary's brother, passed away. Mary and her family wanted to memorialize Arthur in a way that embodied the family values of conservation and community, so a memorial forest was planted. Lyman and Pat Anderson, with help from local boy scouts, planted more than 11,000 trees and shrubs on a 14-acre plot to establish the Arthur Sholts Memorial Woods. This forest was the beginning of the park you see today.

Family photos courtesy of the Anderson family.



[www.danecountyparks.com](http://www.danecountyparks.com)  
dane-parks@countyofdane.com  
608-224-3730 TTY: Call WI Relay 771



Translations Available  
[www.danecountyparks.com/QRA1](http://www.danecountyparks.com/QRA1)

